

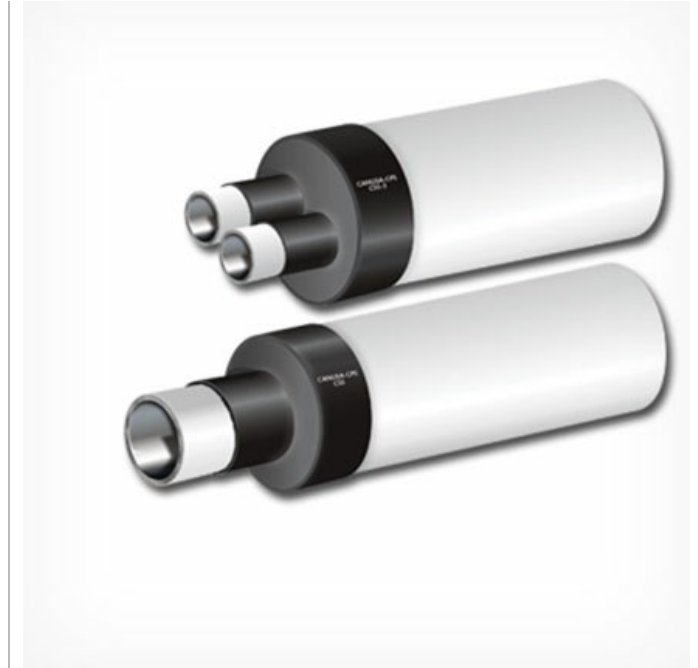
# Canusa TubularStops - PLX

## High shrink end cap for pre-insulated pipes

The Canusa Tubularstop - PLX-65 is a heat-shrinkable, end cap for preinsulated pipes (example: district heating pipes). The PLX-65 is made from a specially formulated crosslinked polymer and when combined with a high temperature sealant (ECS), it provides a high quality, reliable system for the sealing protection of preinsulated pipes

### Watertight Seal

The Canusa Tubularstop - PLX-65 is designed to provide a watertight seal and prevent water access to the exposed insulation at the weld joint area. Upon application of heat, the PLX-65 shrinks to conform to the profile of the insulated pipe, while the sealant simultaneously “melts” to bond to the jacket pipe and the service pipe. To ensure overall protection of the insulating foam, PLX-65 should be used on both pipe ends



### Insulation Protection

The Canusa Tubularstop - PLX-65 can be factory-installed on the preinsulated pipe. Once installed, the PLX- 65 protects the insulation during transportation and storage. During service, the PLX-65 prevents water ingress into the insulation in the event of leakage at the joint. This can greatly reduce repair costs.

### Large Size Range

The Canusa Tubularstop - PLX-65 is available in a full range of sizes to fit most service/jacket pipe combinations. Since the PLX-65 is heat shrinkable, one size can be used to cover several jacket pipe/service pipe combinations.

### Easy Installation

The Canusa Tubularstop - PLX-65 is quick and easy to install. Upon application of heat the product quickly conforms to cover the pipe ends. The PLX- 65 comes with a separate roll of adhesive which reduces the installation time.

PLX-65 PROPERTIES	TEST METHOD	TYPICAL VALUES
Tensile Strength	ASTM D638	24 MPa

PLX-65 PROPERTIES	TEST METHOD	TYPICAL VALUES
Elongation	ASTM D638	700%
Hardness	ASTM D2240	48 Shore D
Dielectric Voltage Breakdown	ASTM D149	27 kV/mm
Water Absorption	ASTM D570	0.05%
<b>ECS Properties</b>		
Temp. Range	-	-23°C to 120°C
Lap Shear Strength	ASTM D1002-53T	12 N/cm <sup>2</sup>
Compression Force (1" x 1½" x 4")	ASTM D395.55	6.8 kg
Elongation	ASTM D638	400%
Hardness (100g, 5s)	Penetrometer	58
Low Temp. Flexibility	ASTM D2671	-15°C

Last Updated: 12/18/2017 3:42:49 PM