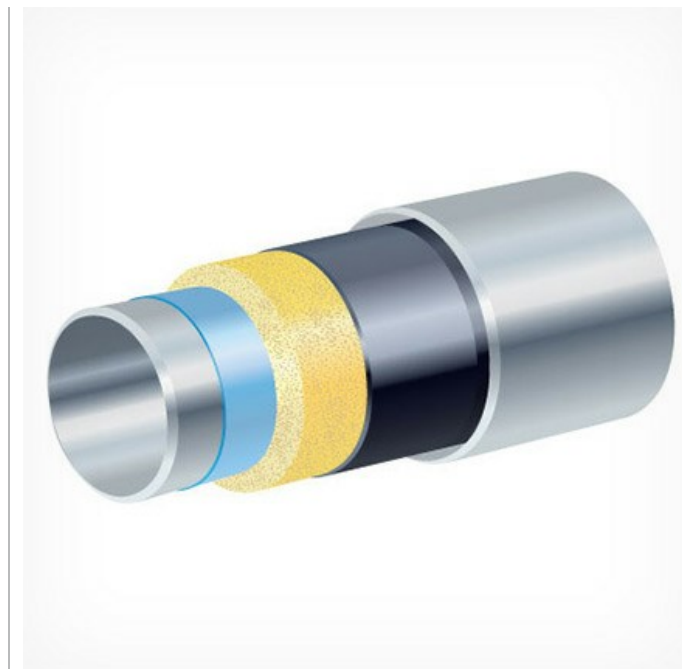


Pipe-In-Pipe

PU Foam Insulated Pipe-in-Pipe

Pipe-in-Pipe is a low density polyurethane foam product applied by either injection moulding or spray application for use in pipe-in-pipe systems providing highly efficient insulation performance in both shallow and deepwater applications.

- Extensive track record
- Low K value
- Wide U value performance
- Temperature range performance
- High manufacturing throughputs
- Consistent properties



CAPABILITY/PROPERTY	SHALLOW WATER PIPE-IN-PIPE (S)	DEEP WATER PIPE-IN-PIPE (D)
Minimum pipe diameter	150 mm (6")	150 mm (6")
Maximum pipe diameter	406.4 mm (16")	406.4 mm (16")
Minimum operating temperature	-35°C (-30°F)	-35°C (-30°F)
Maximum operating temperature	150°C (302°F)	130°C (266°F)
Minimum pipe length	9 m (30')	9 m (30')
Maximum pipe length	13 m (43')	13 m (43')
OHTC (U value)	< 1.0 W/m ² .K (0.58 BTU/ft ² .hr.F)	< 1.0 W/m ² .K (0.58 BTU/ft ² .hr.F)
Maximum Water Depth	Design Department	Design Department

CAPABILITY/PROPERTY	SHALLOW WATER PIPE-IN-PIPE (S)	DEEP WATER PIPE-IN-PIPE (D)
K value	0.021 W/m.K (0.0121 BTU/ft.hr.F)	0.021 W/m.K (0.0121 BTU/ft.hr.F)

Last Updated: 11/12/2018 2:57:23 PM