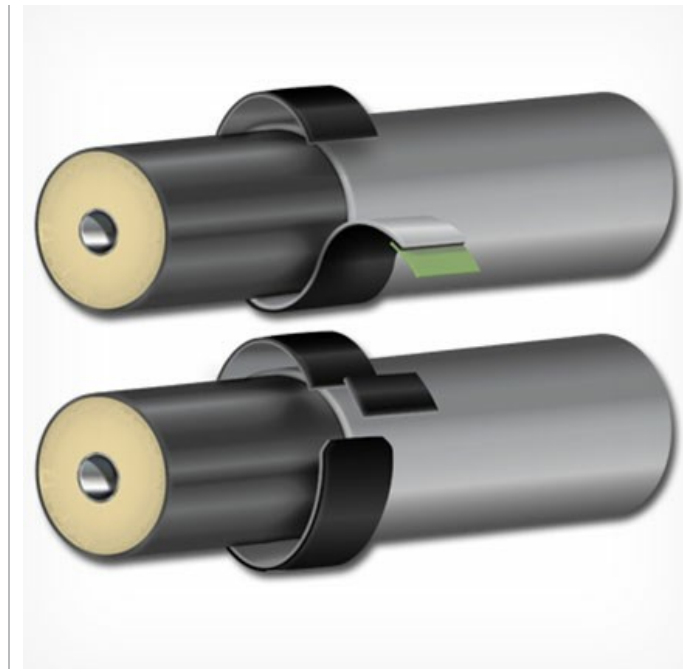


SuperSeal™

Heat shrinkable sleeve for protection of pre-insulated pipe joints

SuperSeal™ Is A High Performance, Heat Shrinkable Product Intended For Sealing Of Pre-Insulated Pipe Joints.

SuperSeal™ provides superior barrier against moisture ingress while protecting the joints from the soil stresses associated with Pre-Insulated Pipelines. Specifically designed for bonding to polyethylene pipes and casings, SuperSeal™ offers low substrate pre-heat temperature thus making the installation of this product simple, forgiving, and most importantly, reliable.



Effective Long Term Sealing

- A combination of cross-linked polyethylene backing with a layer of unique hot melt adhesive, results in a long term barrier impermeable to moisture
- As part of an insulated pipe joint casing and sealing system, SuperSeal™ complies with the stringent requirements of the EN 489 standard

Proven Track Record

- SuperSeal™ has been protecting joints of pre-insulated pipelines for over 25 years

Reliable and Consistent Performance

- Low installation pre-heat temperature ensures uniform and consistent bond to the substrate
- High performance backing provides superior mechanical strength required for high stress environments

Flexible Product Options Save Time and Money

- Available in three configurations: pre-cut to specific pipe size, bulk rolls and tubes
- Allows for lower inventories of pre-cut sleeves and just-in-time sleeve cutting, thus reducing cost

| ADHESIVE PROPERTIES | TEST METHOD | TYPICAL VALUES |
|---------------------|-------------|-----------------------|
| Softening Point | ASTM E28 | 90°C |
| Lap Shear @ 23°C | EN 12068 | 135 N/cm ² |

| ADHESIVE PROPERTIES | TEST METHOD | TYPICAL VALUES | |
|--|-------------|--|--------------|
| Backing Properties | | | |
| Tensile Strength | ASTM D638 | 24 MPa | |
| Elongation | ASTM D638 | 700% | |
| Hardness | ASTM 2240 | 48 Shore D | |
| Hardness | ASTM D1044 | 35 mg | |
| Sleeve Properties | | | |
| Adhesion Strength @ 23°C | EN 12068 | 80 N/cm | |
| Water Absorption | ASTM D570 | 0.05 % | |
| Low Temp. Flexibility | ASTM D2671 | -30°C | |
| Soil Box & Pressure Vessel Test* | EN 489 | 100 cycles, 30 kPa @ 30°C for 24 h (Tested with 8.0% sand humidity) | |
| Soil Box & Pressure Vessel Test | EN 489 | 1000 cycles, 100 kPa @ 40°C for 600 h (Tested with 8.0% sand humidity) | |
| Thickness | T | L | Tubes |
| Backing (nominal thickness as supplied) | 0.6 mm | 0.9 mm | 0.6 mm |
| Adhesive (nominal thickness as supplied) | 0.9 mm | 1.3 mm | 0.8 mm |

Last Updated: 12/18/2017 3:43:49 PM