

# Kabil, Indonesia

## ABOUT KABIL

Shawcor's Kabil facility is strategically located in the new Kabil Industrial Estate on Batam Island, Indonesia, in order to effectively service clients in the Indonesian and international markets with greater flexibility and minimum transportation costs of bare and coated pipes. The facility is the only coating facility in Indonesia, leading the way with offering all coating technologies at the one facility, from anti-corrosion coating to protective and concrete weight coating, from flow assurance coating to internal coating for pipe up to 1525 mm (60") diameter, which provides a one-stop center to efficiently manage and deliver multiple pipe coating projects.

The Kabil facility is located adjacent to the Kabil Offshore Deepwater Port with dedicated, priority load-in and load-out facilities within 500 metres from the site, which provides logistical savings and reduces risk of laybarge downtime and demurrage due to priority berthing. In addition, a back-up port is located 6 km from Kabil.

Shawcor is the industry leader in providing a safe and healthy workplace. The Kabil facility has incorporated the latest technology in HSE practices and improved upon the quality control systems that are presently in operation.

## SPECIAL SERVICES

- Custom coating facility for bends, flanges, tees, etc (Internal, external liquid epoxy, FBE, PE & PP coating capability using manual spray application)
- Anode installation
- Buckle arrestors
- Rebeveling
- Field joint services

## APPROVALS AND QUALITY ASSURANCE

- Quality System accredited to BS EN ISO 9001:2015
- ISO 17025 for FBE, 3-layer and insulation coatings

## PIPE COATING PRODUCTS

	Diameter mm (")		Length m (')	
	min.	max.	min.	max.
<b>ANTI-CORROSION</b>				
3-Layer Polyethylene	50 (2)	1525 (60)	10.5 (34.4)	24 (80)
3-Layer Polypropylene	50 (2)	1525 (60)	10.5 (34.4)	24 (80)
AE	50 (2)	1423 (56)	10.5 (34.4)	18 (60)
Fusion Bonded Epoxy	50 (2)	1525 (60)	10.5 (34.4)	24 (80)
Dual-Layer FBE	50 (2)	1525 (60)	10.5 (34.4)	24 (80)
External Paint	50 (2)	1220 (48)	9.5 (31)	18 (60)
<b>PROTECTIVE AND WEIGHT</b>				
HeviCote®	100 (4)	1525 (60)	10.5 (34.4)	18 (60)
Compression Coat*	168 (6.625)	1525 (60)	10.7 (35)	12.8 (42)
Rock Jacket®	168 (6.625)	1525 (60)	10.7 (35)	12.8 (42)
<b>FLOW ASSURANCE</b>				
Insulation Coating (PUF)	100 (4)	1220 (48)	9.5 (31)	12.7 (42)
Pipe-in-Pipe	50 (2)	1220 (48)	9.5 (31)	12 (40)
ThermoFlo®	100 (4)	1220 (48)	9.5 (31)	12.7 (42)
Thermotite®	150 (6)	914 (36)	10.5 (34.4)	24 (80)
<b>INTERNAL</b>				
SureFlo™ FEC	150 (6)	1423 (56)	10.5 (34.4)	18 (60)
SureFlo™ SF	150 (6)	1423 (56)	10.5 (34.4)	18 (60)
<b>CUSTOM COATING</b>				
Custom Coatings	100 (4)	864 (34)	--	12 (40)

\* Maximum pipe weight is 40,000 lbs.

## LOCATION



## ACCESS

### Truck

- PT. Bredero Shaw Indonesia  
Jl. Hang Kesturi  
Kav 3A1  
Kawasan Industri Terpadu  
Kabil, Batam, 29467 Indonesia

### Marine

- Kabil Offshore Port is 500 metres from our plant site. It has two berths with 12.5 metre water depth capable of handling up to 40,000DWT vessels and one berth with 10 metre water depth capable of handling up to 28,000DWT vessels.
- A dedicated load out berth adjacent to our coating site which has five metre water depth for barge load outs. A dedicated 150 MT crawler crane is located at the load out jetty.

## PARTIAL LIST OF COMPLETED PROJECTS

### RA#6 - Ratchaburi Pipeline Project

Coating : Internal & 3LPE  
Length : 122.7 km  
Diameter : 30"  
Location : Thailand  
Year : 2018

### Shah Deniz II

Coating : 3LPP & MLPP  
Length : 75 km  
Diameter : 14"  
Location : Azerbaijan  
Year : 2016

### Ichthys LNG - URF

Coating : 3LPP & MLPP  
Length : 118 km  
Diameter : 6", 8", 12" & 18"  
Location : Australia  
Year : 2013

### Tangguh Phase II (Train 3)

Coating : 3LPP & Concrete  
Length : 30.7 km  
Diameter : 16", 18" & 24"  
Location : Indonesia  
Year : 2017

### Jangkrik Complex

Coating : 3LPE & Concrete  
Length : 197 km  
Diameter : 4", 12" & 24"  
Location : Indonesia  
Year : 2015

### Ichthys LNG - Gas Export Pipeline

Coating : Internal, AE & Concrete  
Length : 445 km  
Diameter : 42"  
Location : Australia  
Year : 2012-2014

### Greater Western Flank Phase II

Coating : MLPP  
Length : 39.1 km  
Diameter : 10" & 16"  
Location : Australia  
Year : 2017

### Zawtika Development Phase 1A, 1B & 1C

Coating : 3LPE, 3LPP & Concrete  
Length : 477 km  
Diameter : 10", 12", 14", 18" & 28"  
Location : Myanmar  
Year : 2011 & 2015

### Wheatstone LNG - Mainline

Coating : FBE, 3LPP, Internal & Concrete  
Length : 148 km  
Diameter : 44"  
Location : Australia  
Year : 2012

### GWF-2 Development

Coating : 3LPP & MLPP  
Length : 40 km  
Diameter : 11", 15" & 16"  
Location : Australia  
Year : 2017

### Fortescue River Gas Pipeline

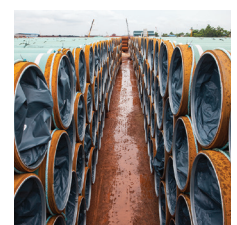
Coating : DLFBE, Internal, Compression Coat & Rock Jacket  
Length : 272 km  
Diameter : 16"  
Location : Australia  
Year : 2014

### Sur de Texas Tuxpan

Coating : Internal & FBE  
Length : 93 km  
Diameter : 42"  
Location : Mexico  
Year : 2016-2017

### Arun Belawan Gas Pipeline

Coating : 3LPE  
Length : 133 km  
Diameter : 24"  
Location : Indonesia  
Year : 2013-2014



## ABOUT SHAWCOR

Shawcor is the global leader in pipe coating solutions. With more than 80 years of experience, the largest team of dedicated pipe coating professionals, the most extensive network of strategically located plants worldwide and with proven innovative coating technologies, the company has protected more pipelines in virtually every environment and operating condition than anyone in the industry.

Shawcor offers technologically advanced solutions for anti-corrosion coatings, protective and weight coatings, thermal flow assurance coatings, internal coatings, custom coatings and field joints for both onshore and offshore applications. This broad range of products and services provides Shawcor with the unique capability to service the full spectrum of pipeline protection and flow assurance requirements. Consult with your Shawcor representative for your unique project requirements.

**Health and Safety** Shawcor is committed to providing a safe and healthy workplace and ensuring our business activities are conducted in a manner that protects the environment. The company's commitment to employee safety is promoted through our Incident and Injury Free (IIF) philosophy.

The information contained herein is indicative of the types of coatings provided by Shawcor, and is not intended to be a guarantee that a particular coating will be suitable for a given application. Since many unique environmental, operating, and design conditions must be considered, the user shall determine the suitability of the coating for the intended use and assume all the risks and liabilities in connection therewith. Shawcor's liability is stated in our standard conditions of sale.

### PLANT OFFICE

Jl. Hang Kesturi Kav.3A1,  
Kawasan Industri Terpadu Kabil  
Batam 29467  
Indonesia  
Phone: +62-778-412-275

### ASIA PACIFIC

Shawcor  
101 Thomson Road  
#17-01 United Square  
Singapore 307591  
Phone: +65-6477 5300  
asiapacific@brederoshaw.com

### HEAD OFFICE

5875 N. Sam Houston Pkwy W.  
Suite 200  
Houston, Texas  
77086, USA  
Phone: +1-281-886-2350